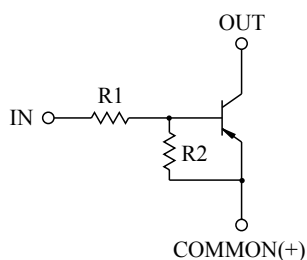


SWITCHING APPLICATION.
INTERFACE CIRCUIT AND DRIVER CIRCUIT APPLICATION.

FEATURES

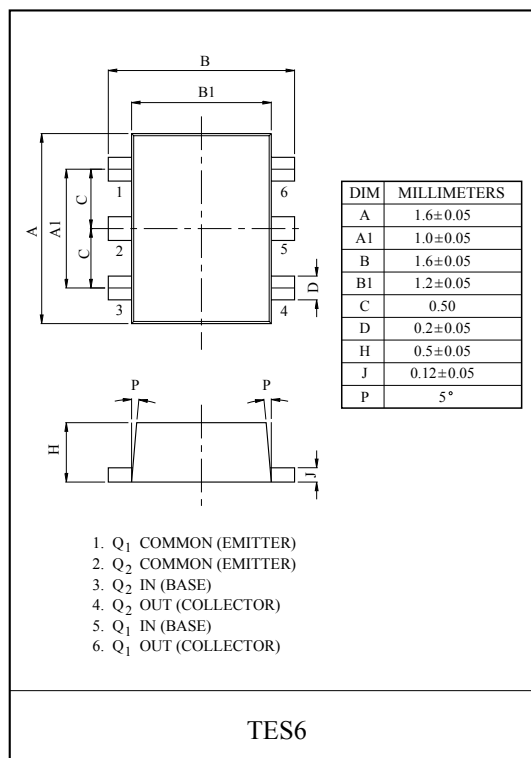
- With Built-in Bias Resistors
- Simplify Circuit Design
- Reduce a Quantity of Parts and Manufacturing Process
- High Packing Density.

EQUIVALENT CIRCUIT

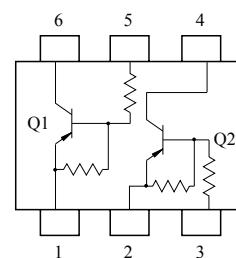


BIAS RESISTOR VALUES

TYPE NO.	R1(k Ω)	R2(k Ω)
KRA727E	10	47
KRA728E	22	47
KRA729E	47	22



EQUIVALENT CIRCUIT (TOP VIEW)



MAXIMUM RATING (Ta=25℃)

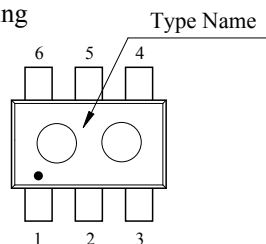
CHARACTERISTIC		SYMBOL	RATING	UNIT
Output Voltage	KRA727E ~ 729E	V _O	-50	V
Input Voltage	KRA727E	V _I	-30, 6	V
	KRA728E		-40, 7	
	KRA729E		-40, 15	
Output Current	KRA727E ~ 729E	I _O	-100	mA
Power Dissipation		P _D *	200	mW
Junction Temperature		T _j	150	℃
Storage Temperature Range		T _{stg}	-55 ~ 150	℃

* Total Rating.

MARK SPEC

TYPE	KRA727E	KRA728E	KRA729E
MARK	JH	JI	JJ

Marking



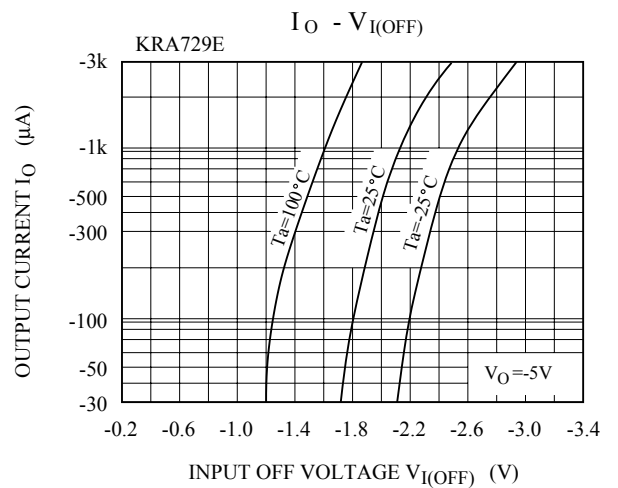
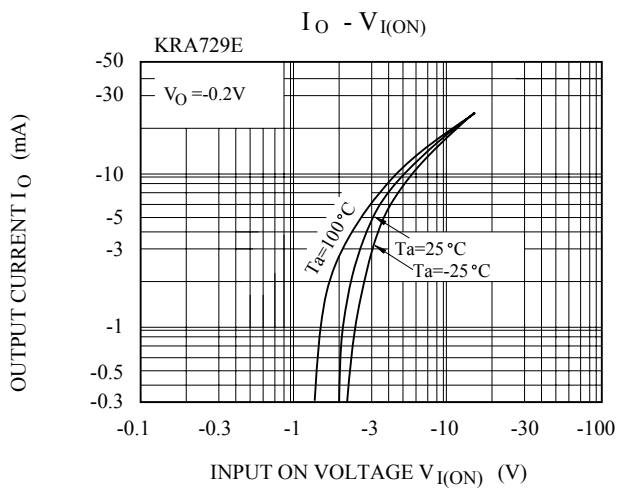
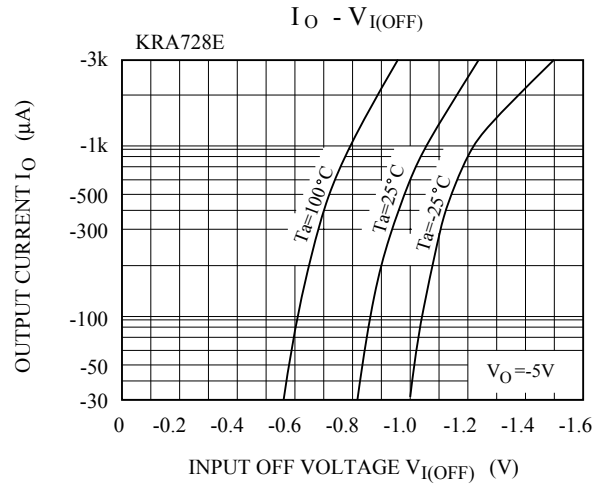
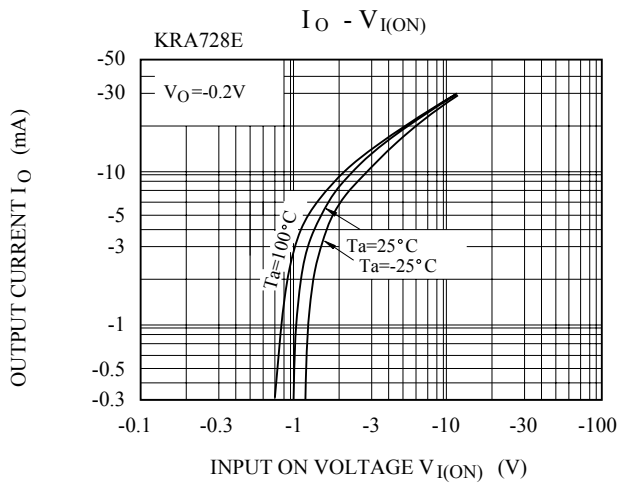
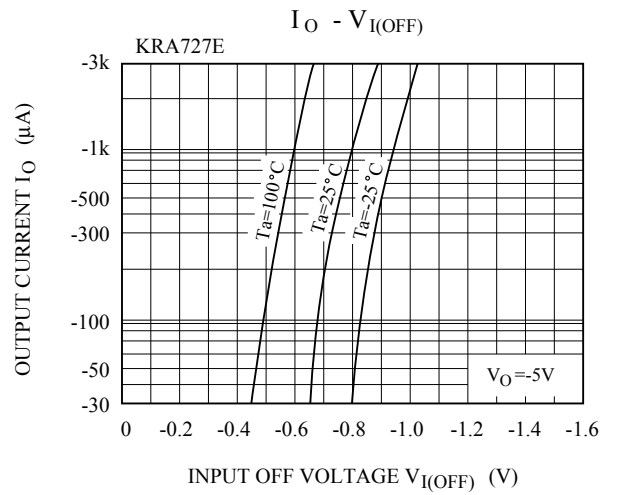
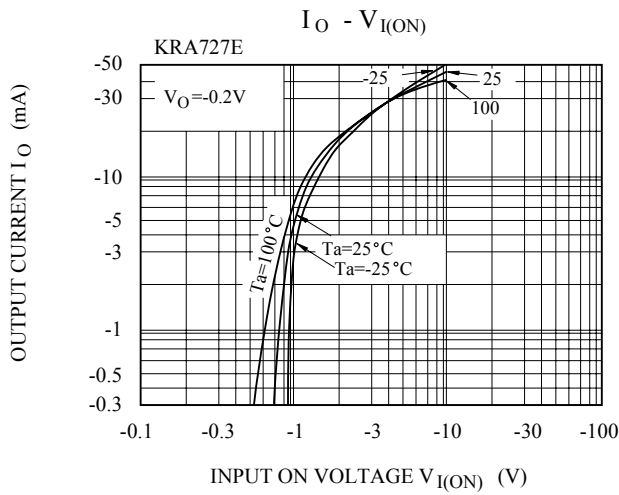
KRA727E~KRA729E

ELECTRICAL CHARACTERISTICS (Ta=25°C)

CHARACTERISTIC		SYMBOL	TEST CONDITION	MIN.	TYP.	MAX.	UNIT
Output Cut-off Current	KRA727E ~ 729E	$I_{O(OFF)}$	$V_O = -50V, V_I = 0$	-	-	-500	nA
DC Current Gain	KRA727E	G_I	$V_O = -5V, I_O = -10mA$	80	150	-	
	KRA728E			80	150	-	
	KRA729E			70	140	-	
Output Voltage	KRA727E ~ 729E	$V_{O(ON)}$	$I_O = -10mA, I_I = -0.5mA$	-	-0.1	-0.3	V
Input Voltage (ON)	KRA727E	$V_{I(ON)}$	$V_O = -0.2V, I_O = -5mA$	-	-1.2	-1.8	V
	KRA728E			-	-1.8	-2.6	
	KRA729E			-	-3.0	-5.8	
Input Voltage (OFF)	KRA727E	$V_{I(OFF)}$	$V_O = -5V, I_O = -0.1mA$	-0.5	-0.75	-	V
	KRA728E			-0.6	-0.88	-	
	KRA729E			-1.5	-1.82	-	
Transition Frequency	KRA727E ~ 729E	f_T^*	$V_O = -10V, I_O = -5mA$	-	200	-	MHz
Input Current	KRA727E	I_I	$V_I = -5V$	-	-	-0.88	mA
	KRA728E			-	-	-0.36	
	KRA729E			-	-	-0.16	
Switching Time	Rise Time	KRA727E	$V_O = -5V, V_{IN} = -5V$ $R_L = 1k\Omega$	-	0.07	-	μS
		KRA728E		-	0.20	-	
		KRA729E		-	0.38	-	
	Storage Time	KRA727E		-	1.1	-	
		KRA728E		-	1.3	-	
		KRA729E		-	0.7	-	
	Fall Time	KRA727E		-	0.35	-	
		KRA728E		-	0.4	-	
		KRA729E		-	0.48	-	

Note : * Characteristic of Transistor Only.

KRA727E~KRA729E



KRA727E~KRA729E

